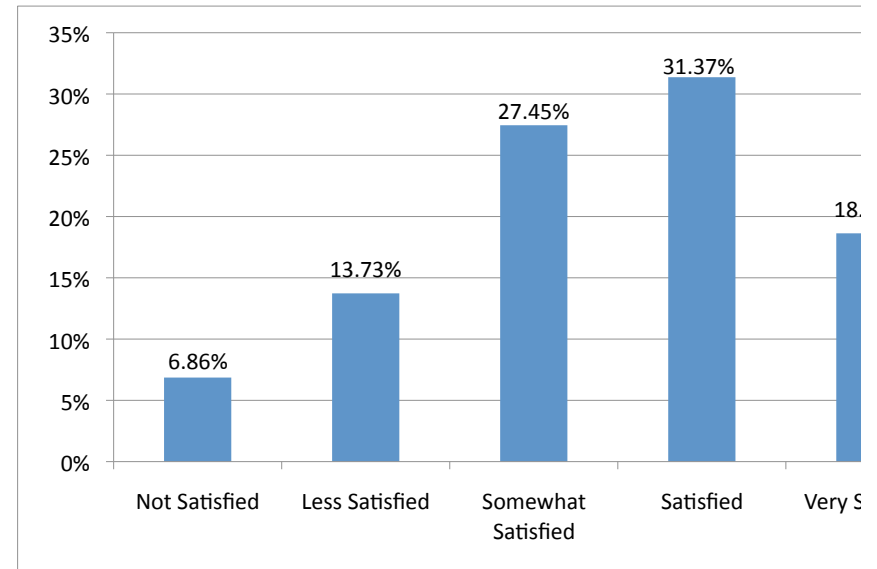


Estrella Mountain Class Schedule Survey Findings Spring 2008

Source: EMCC Office of Planning & Institutional Effectiveness. Spring 2008 Class Schedule Survey. Online Results as of 6/5/08 _2096

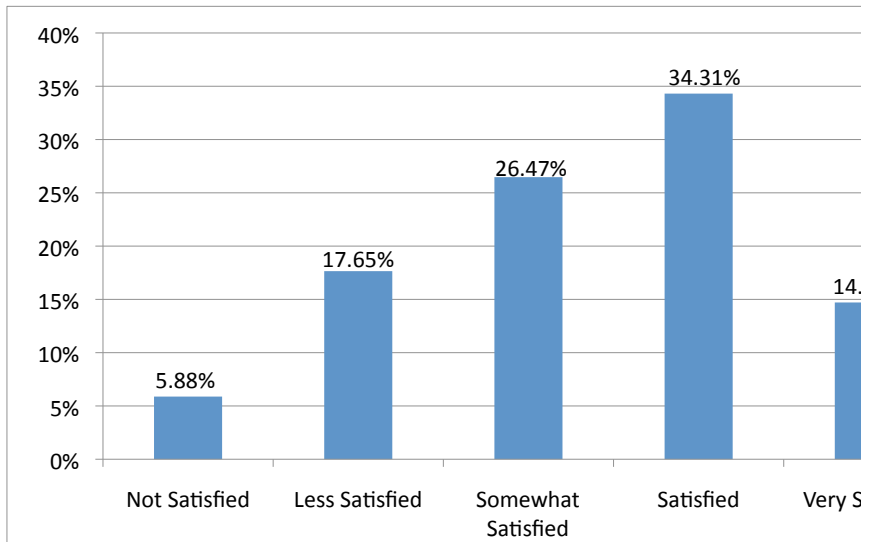
Item Analysis: 1. How satisfied are you with the current schedule of classes in terms of when classes are offered?

Label	Frequency	Percent	Valid Percent
Not Satisfied	7	6.86%	7%
Less Satisfied	14	13.73%	14%
Somewhat Satisfied	28	27.45%	28%
Satisfied	32	31.37%	32%
Very Satisfied	19	18.63%	19%
Total Valid	100	98.04%	100%
Total Missing	2	1.96%	
Total	102	100	



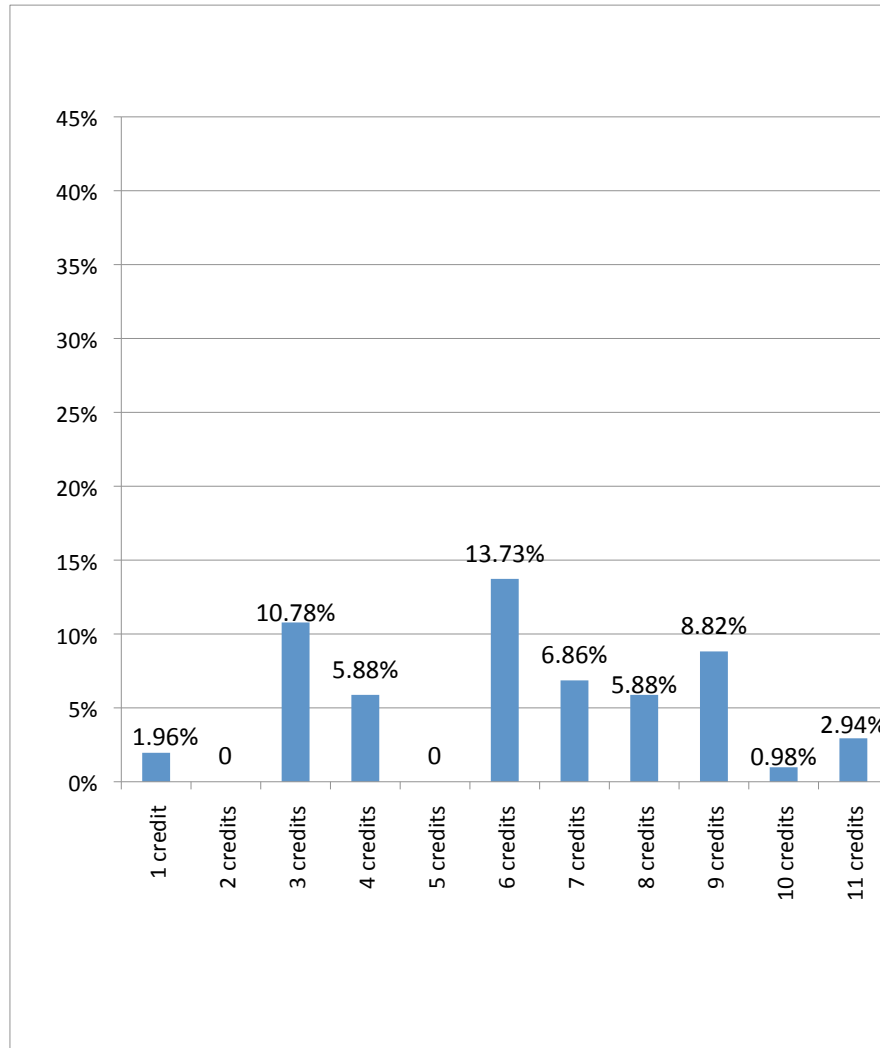
Item Analysis: 2. How satisfied are you with the current schedule of classes in terms of the variety of courses offered?

Label	Frequency	Percent	Valid Percent
Not Satisfied	6	5.88%	5.94%
Less Satisfied	18	17.65%	17.82%
Somewhat Satisfied	27	26.47%	26.73%
Satisfied	35	34.31%	34.65%
Very Satisfied	15	14.71%	14.85%
Total Valid	101	99.02%	100%
Total Missing	1	0.98%	
Total	102	100%	



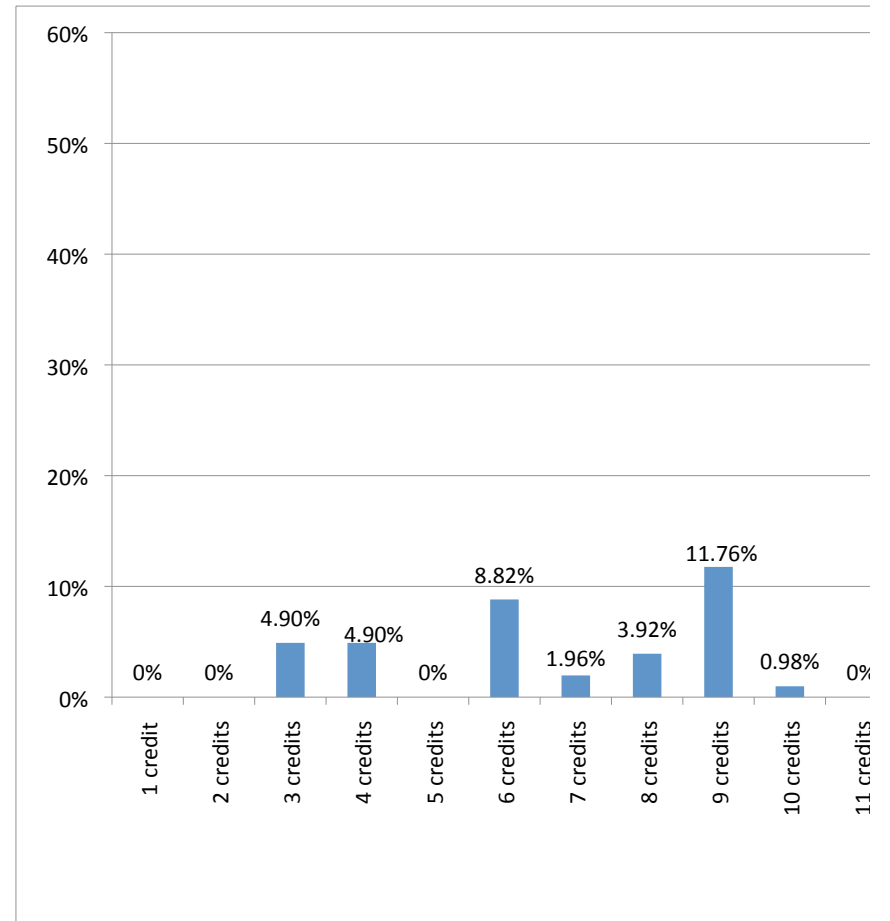
Item Analysis: 3. How many credit hours are you currently taking?

Label	Frequency	Percent	Valid Percent
1 credit	2	1.96%	1.98%
2 credits	0	0	0
3 credits	11	10.78%	10.89%
4 credits	6	5.88%	5.94%
5 credits	0	0	0
6 credits	14	13.73%	13.86%
7 credits	7	6.86%	6.93%
8 credits	6	5.88%	5.94%
9 credits	9	8.82%	8.91%
10 credits	1	0.98%	0.99%
11 credits	3	2.94%	2.97%
12 credits or more	42	41.18%	41.58%
Total Valid	101	99.02%	100%
Total Missing	1	0.98%	
Total	102	100%	



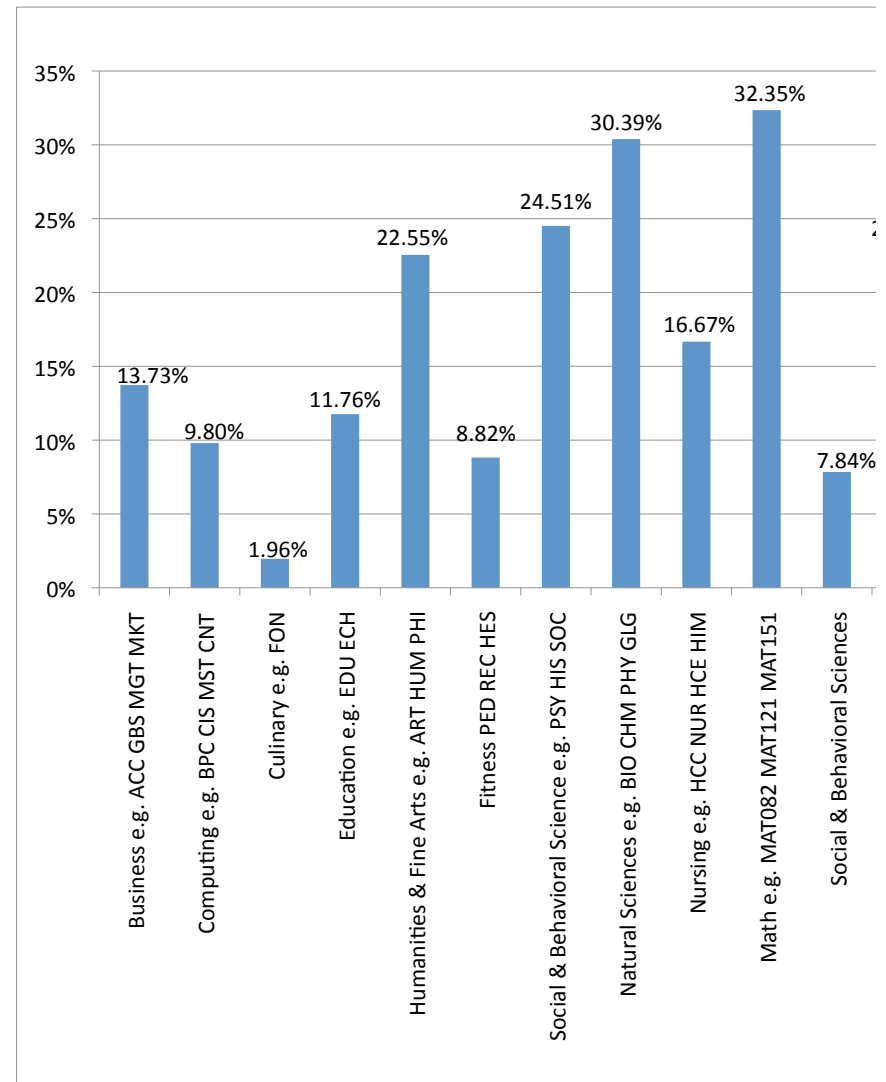
Item Analysis: 3a. How many credit hours would you like to take if the course schedule allowed for it?

Label	Frequency	Percent	Valid Percent
1 credit	0	0%	0%
2 credits	0	0%	0%
3 credits	5	4.90%	5.26%
4 credits	0	4.90%	5.26%
5 credits	0	0%	0%
6 credits	9	8.82%	9.47%
7 credits	2	1.96%	2.11%
8 credits	4	3.92%	4.21%
9 credits	12	11.76%	12.63%
10 credits	1	0.98%	1.05%
11 credits	0	0%	0%
12 credits or more	57	55.88%	60%
Total Valid	95	93.14%	100%
Total Missing	7	6.86%	
Total	102	100%	



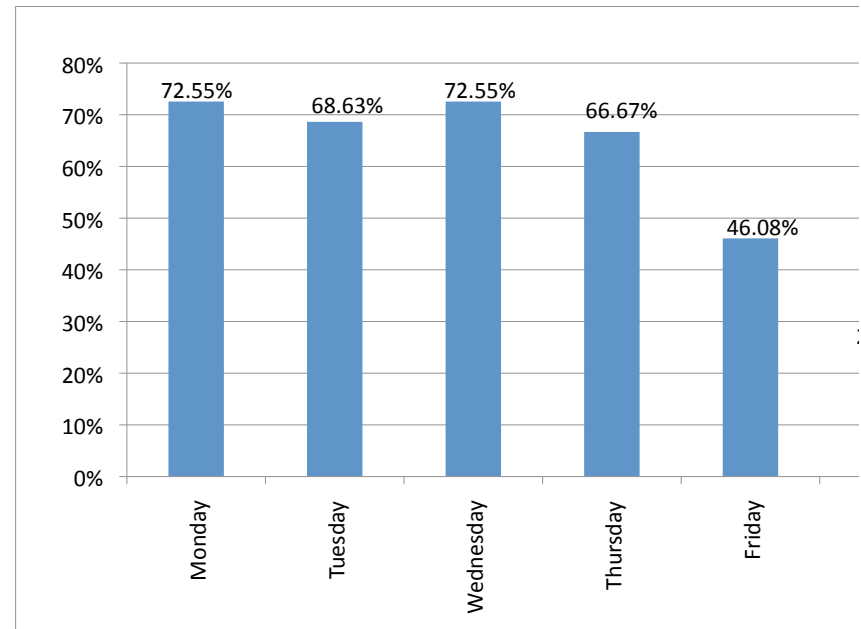
Item Analysis: 4. In thinking of your current class schedule, please mark all areas that those courses fit into?

Label	Frequency	Percent	Valid Percent
Business e.g. ACC GBS MGT MKT	14	13.73%	14.43%
Computing e.g. BPC CIS MST CNT	10	9.80%	10.31%
Culinary e.g. FON	2	1.96%	2.06%
Education e.g. EDU ECH	12	11.76%	12.37%
Humanities & Fine Arts e.g. ART HUM PHI	23	22.55%	23.71%
Fitness PED REC HES	9	8.82%	9.28%
Social & Behavioral Science e.g. PSY HIS SOC	25	24.51%	25.77%
Natural Sciences e.g. BIO CHM PHY GLG	31	30.39%	31.96%
Nursing e.g. HCC NUR HCE HIM	17	16.67%	17.53%
Math e.g. MAT082 MAT121 MAT151	33	32.35%	34.02%
Social & Behavioral Sciences	8	7.84%	8.25%
Other	24	23.53%	24.74%
Total Valid	97	95.10%	100%
Total Missing	5	4.90%	
Total	102	100%	



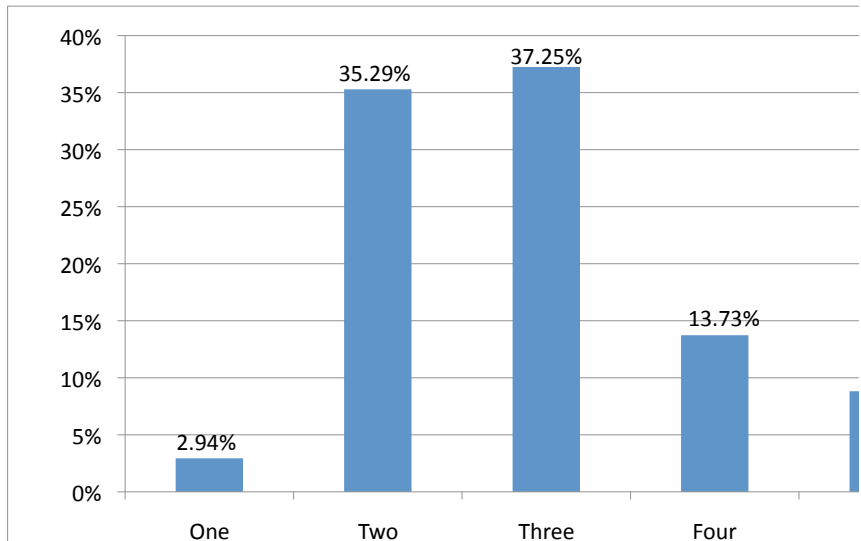
Item Analysis: 5. What days of the week do you prefer to attend class?
Mark all that apply.

Label	Frequency	Percent	Valid Percent
Monday	74	72.55%	73.27%
Tuesday	70	68.63%	69.31%
Wednesday	74	72.55%	73.27%
Thursday	68	66.67%	67.33%
Friday	47	46.08%	46.53%
Saturday	26	25.49%	25.74%
Total Valid	101	99.02%	100%
Total Missing	1	0.98%	
Total	102	100%	



Item Analysis: 6. How many days a week would you like to attend class?

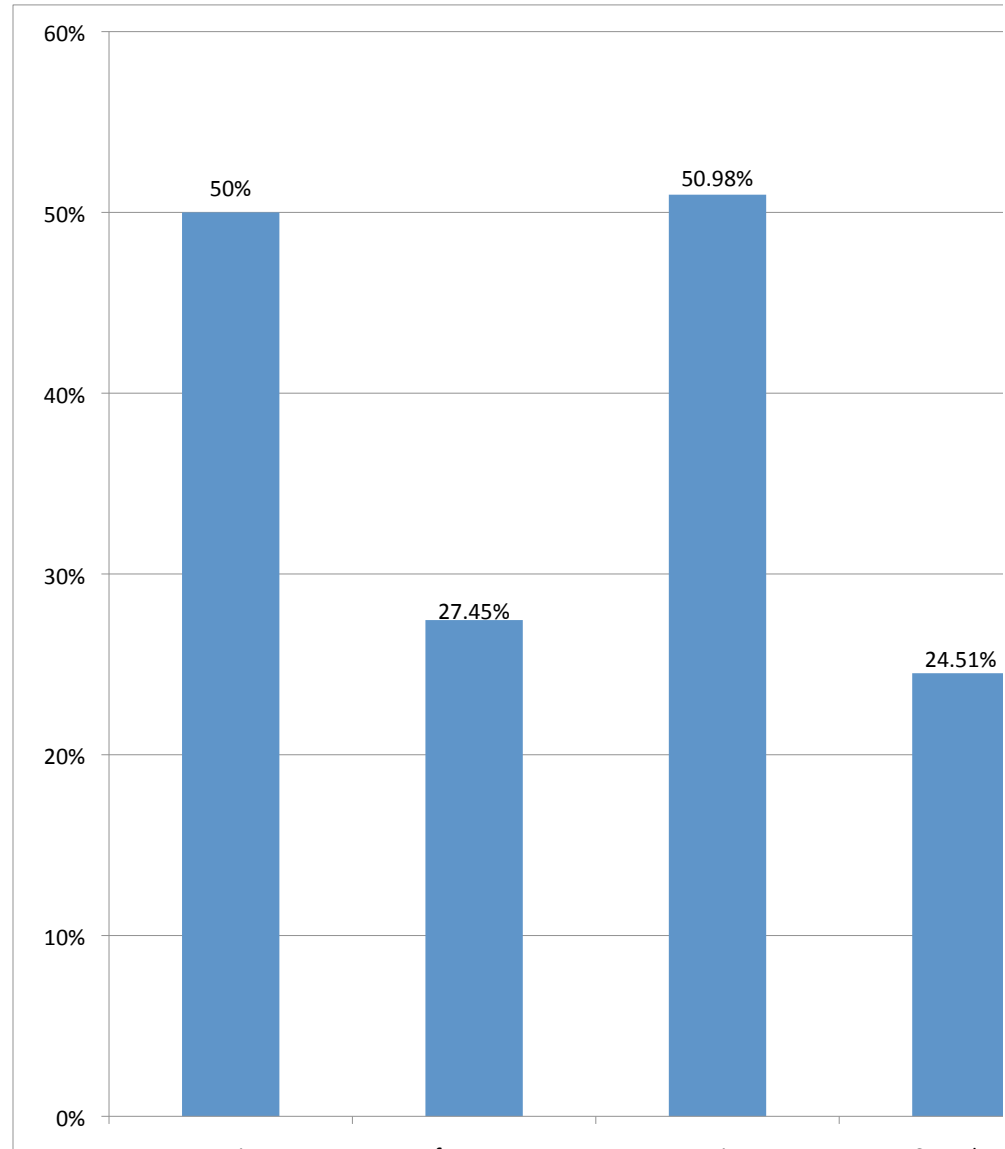
Label	Frequency	Percent	Valid Percent
One	3	2.94%	3%
Two	36	35.29%	36%
Three	38	37.25%	38%
Four	14	13.73%	14%
Five	9	8.82%	9%
Total Valid	100	98.04%	100%
Total Missing	2	1.96%	



Total	102	100%
-------	-----	------

Item Analysis: 7. When do you prefer to take courses? Mark all that apply.

Label	Frequency	Percent
Mornings	51	50%
Afternoons	28	27.45%
Evenings	52	50.98%
Saturdays	25	24.51%
Total	156	153%

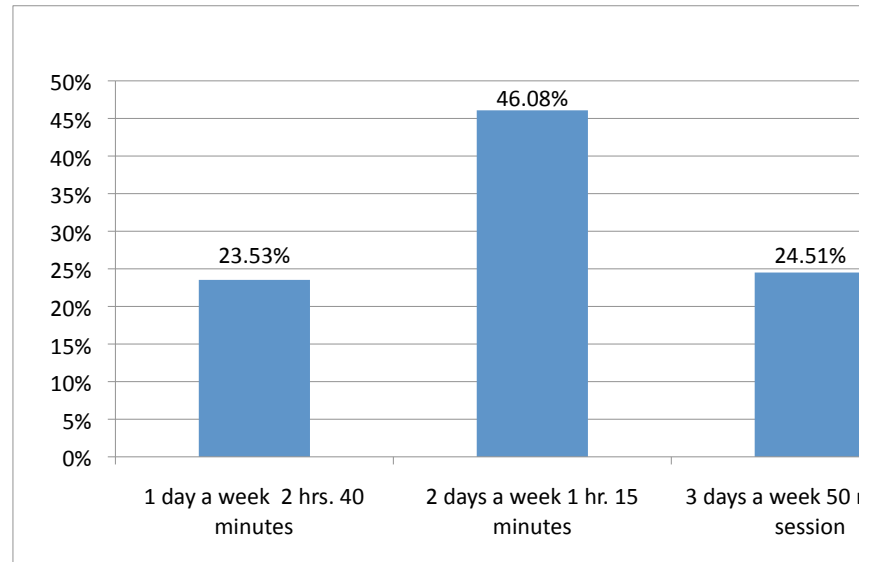


Mornings Afternoons Evenings Saturdays

Which of the following course delivery formats best meets your needs?

Item Analysis: a. 16-week traditional course format

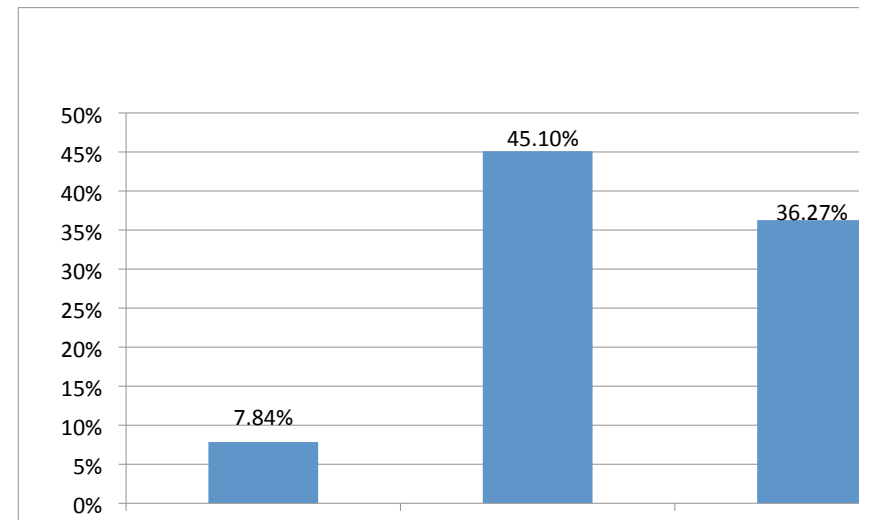
Label	Frequency	Percent	Valid Percent
1 day a week 2 hrs. 40 minutes	24	23.53%	25%
2 days a week 1 hr. 15 minutes	47	46.08%	48.96%
3 days a week 50 minutes session	25	24.51%	26.04%
Total Valid	96	94.12%	100%
Total Missing	6	5.88%	
Total	102	100%	



Which of the following course delivery formats best meets your needs?

Item Analysis: b. 8-week traditional course format

Label	Frequency	Percent	Valid Percent
1 day a week 5 hrs. 30 minutes	8	7.84%	8.79%
2 days a week 2 hrs. 40 minutes	46	45.10%	50.55%
3 days a week 1 hr. 40 minutes	37	36.27%	40.66%
Total Valid	91	89.22%	100%
Total Missing	11	10.78%	
Total	102	100%	



Item Analysis: c. Hybrid Course: (16-week term format) Hybrid courses are a combination of face-to-face class sessions and online instruction. Class typically meet less frequently requiring more out of class work.

Label	Frequency	Percent	Valid Percent
16-week hybrid meets 1 day a week 1 hr. 15 minutes	49	48.04%	53.85%
8-week hybrid meets 1 day a week 2hrs. 40 minutes	42	41.18%	46.15%
Total Valid	91	89.22%	100%
Total Missing	11	10.78%	
Total	102	100%	

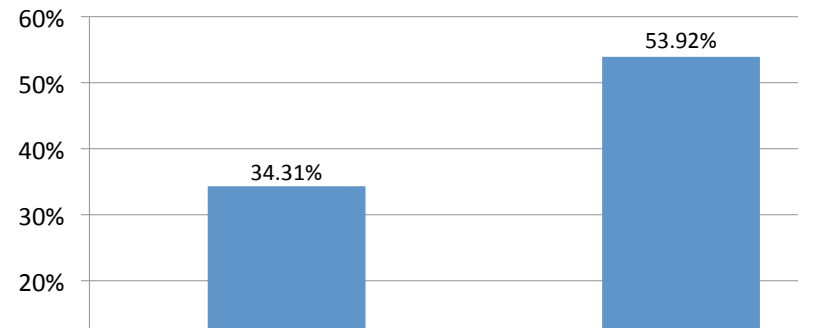
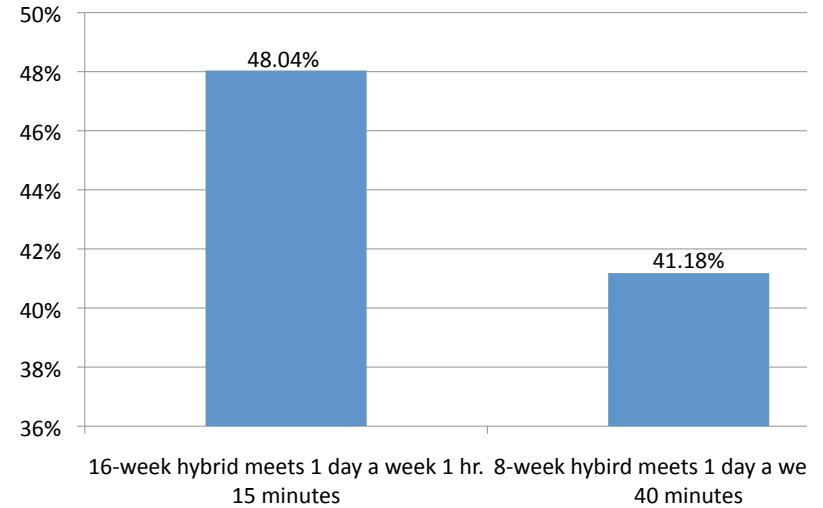
Item Analysis: d. Online Courses: Online courses are completed over the Internet and do not meet "in person".

Label	Frequency	Percent	Valid Percent
16 - week format	35	34.31%	38.89%
8 - week format	55	53.92%	61.11%
Total Valid	90	88.24%	100%

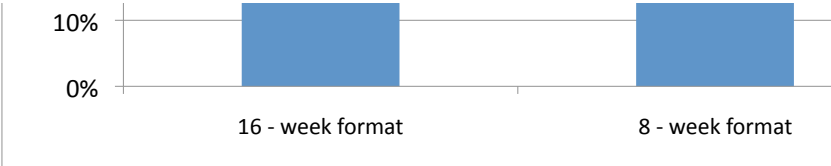
1 day a week 5 hrs. 30 minutes

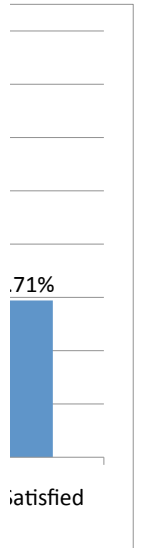
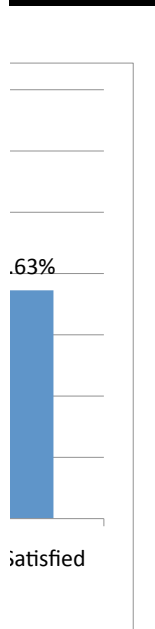
2 days a week 2 hrs. 40 minutes

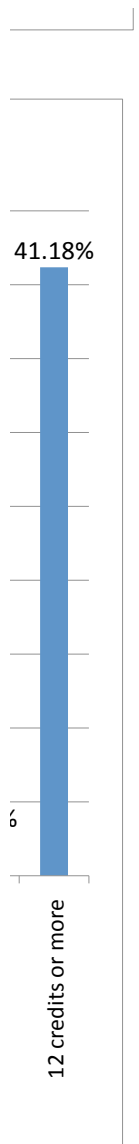
3 days a week 1 minutes

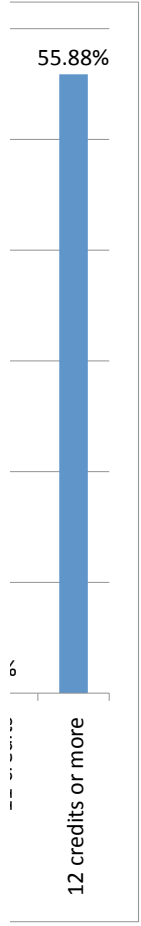


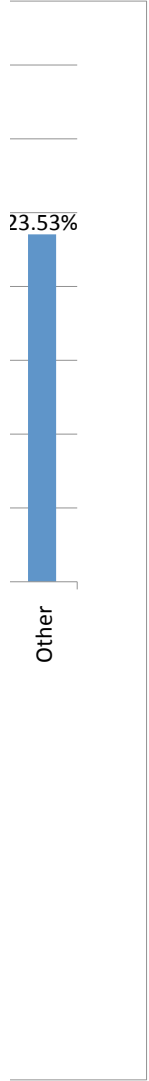
Total Missing	12	11.76%	
Total	102	100%	

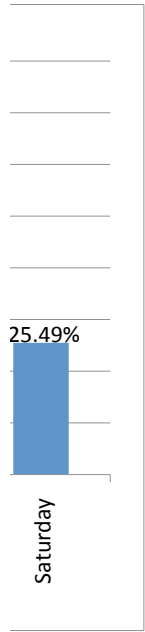






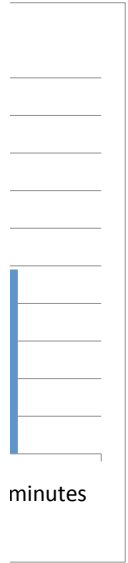








5



hr. 40

ek 2hrs.
